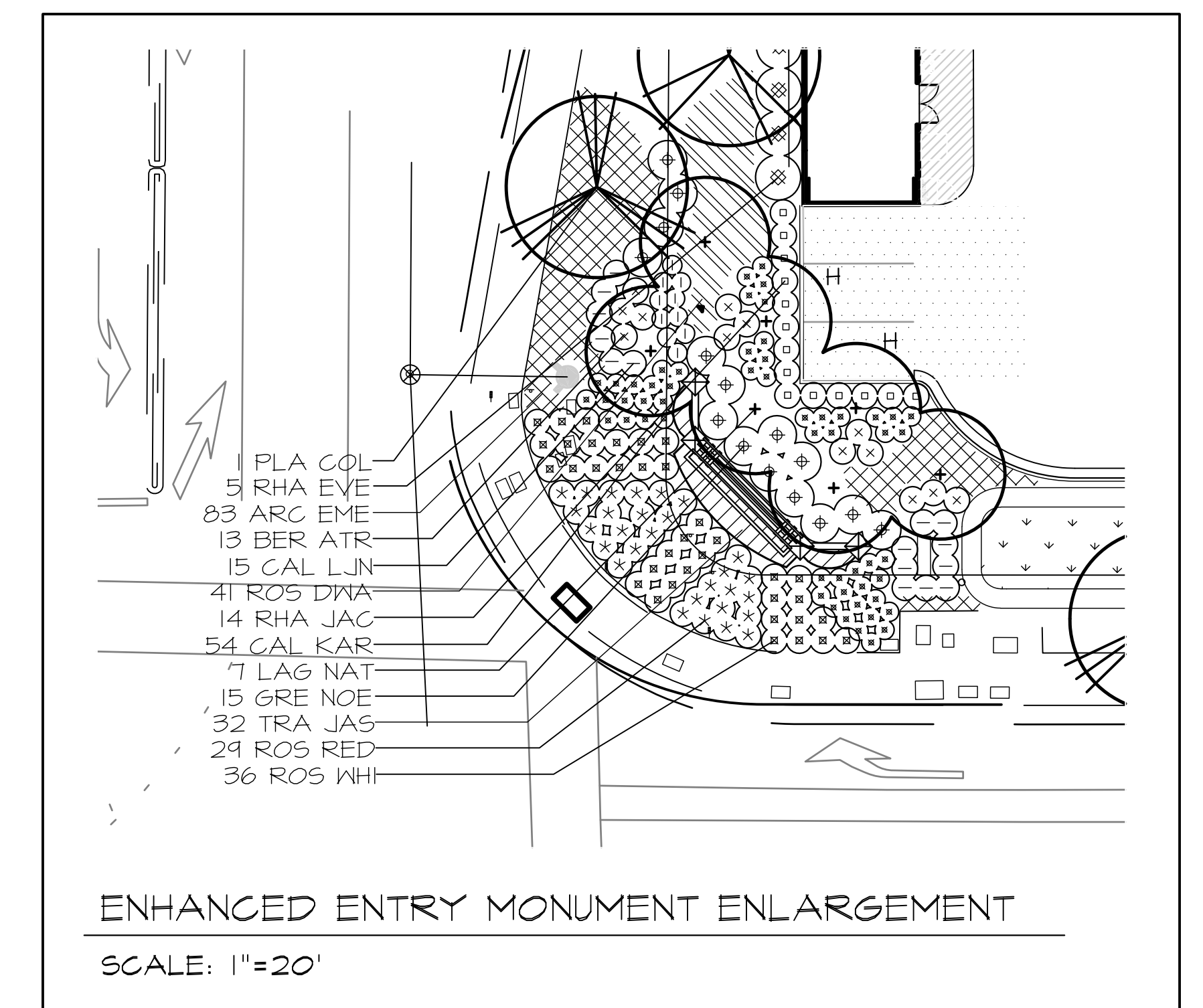


PLANT SCHEDULE

TREES	CODE	BOTANICAL / COMMON NAME	SIZE	QUANTITY
	ACE OGL	Acer rubrum 'October Glory' / October Glory Red Maple	15 gal	
	LAG NAT	Lagerstroemia indica x fauriei 'Natchez' / Natchez Grape Myrtle	15 gal	
	LAU NOB	Laurus nobilis / Sweet Bay	15 gal	
	PIN ELD	Pinus eldarica / Afghan Pine	15 gal	
	PIS KEI	Pistacia chinensis 'Keith Davey' / Keith Davey Chinese Pistache	24" box	
	PLA COL	Platanus x acerifolia 'Columbia' / Columbia London Plane Tree	15 gal	
	QUE SKY	Quercus robur 'Fastigiata' TM / Skyrocket English Oak	15 gal	
	ULM DRA	Ulmus parvifolia 'Drake' / Drake Lacebark Elm	15 gal	
	ZEL SER	Zelkova serrata / Sawleaf Zelkova	15 gal	

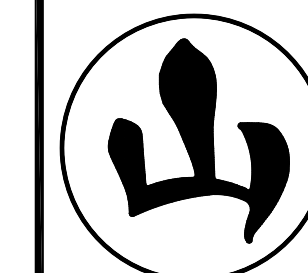
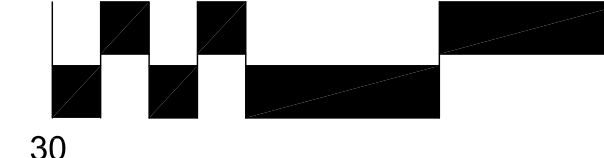
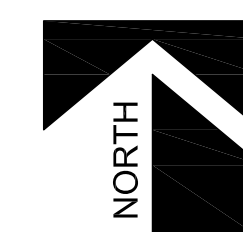
SEE SHEET L1.2 FOR FULL PLANT SCHEDULE



PRELIMINARY LANDSCAPE PLAN
WEST ROSEVILLE MARKETPLACE
1798 PLEASANT GROVE BLVD., ROSEVILLE, CA

SHEET L1.1

JOB #: 22002
DATE: 7/11/22



YAMASAKI
LANDSCAPE ARCHITECTURE
1223 HIGH STREET, AUBURN, CA 95603
(530) 885-0040
FAX: (530) 885-0042

NADEL STUDIO ONE, INC.
1990 S. BUNNY DR., SUITE 400
LOS ANGELES, CA 90025
T: 310.826.2100 F: 310.826.0182
WWW.NADELARC.COM



PLANT SCHEDULE

TREES	CODE	BOTANICAL / COMMON NAME	SIZE	WUCOLS	
	ACE OGL	Acer rubrum 'October Glory' / October Glory Red Maple	15 gal	L	
	LAG NAT	Lagerstroemia indica x fauriei 'Natchez' / Natchez Grape Myrtle	15 gal	L	
	LAU NOB	Laurus nobilis / Sweet Bay	15 gal	L	
	PIN ELD	Pinus eldarica / Afghan Pine	15 gal	L	
	PIS KEI	Pistacia chinensis 'Keith Davey' / Keith Davey Chinese Pistache	24" box	L	
	PLA COL	Platanus x acerifolia 'Columbia' / Columbia London Plane Tree	15 gal	M	
	QUE SKY	Quercus robur 'Fastigiata' TM / Skyrocket English Oak	15 gal	L	
	ULM DRA	Ulmus parvifolia 'Drake' / Drake Lacebark Elm	15 gal	L	
	ZEL SER	Zelkova serrata / Sawleaf Zelkova	15 gal	L	
POTENTIAL SHRUBS	CODE	BOTANICAL / COMMON NAME	SIZE	WUCOLS	
	BER ATR	Berberis thunbergii 'Atropurpurea' / Red Leaf Japanese Barberry	5 gal	L	
	CAL LJN	Callistemon viminalis 'Little John' / Little John Weeping Bottlebrush	5 gal	L	
	CIS HMI	Cistus x hybridus 'Mickle' / Mickle Rockrose	5 gal	L	
	GRE NOE	Grevillea x 'Noellii' / Noel Grevillea	5 gal	L	
	MAH SOF	Mahonia evjibracteata 'Soft Caress' / Mahonia Soft Caress	5 gal	L	
	NAN COM	Nandina domestica 'Compacta' / Dwarf Heavenly Bamboo	5 gal	L	
	NAN HAR	Nandina domestica 'Harbour Dwarf' / Harbour Dwarf Heavenly Bamboo	5 gal	L	
	NAN LEM	Nandina domestica 'Lemon Lime' / Lemon Lime Nandina	5 gal	L	
	PIT VAR	Pittosporum tobira 'Variegata' / Variegated Japanese Pittosporum	5 gal	L	
	PRU BRI	Prunus caroliniana 'Monus' TM / Bright 'N Tight Carolina Laurel Cherry	5 gal	L	
	RHA EVE	Rhamnus californica 'Eve Case' / California Coffeeberry	5 gal	L	
	RHA JAC	Rhaphiolepis indica 'Jack Evans' / Indian Hawthorn	5 gal	M	
	ROS RED	Rosa x 'Noare' TM / Flower Carpet Red Groundcover Rose	2 gal	WUCOLS	
	ROS WHI	Rosa x 'Noaschnee' TM / Flower Carpet White Groundcover Rose	2 gal	L	
POTENTIAL GRASSES	CODE	BOTANICAL / COMMON NAME	SIZE	WUCOLS	
	CAL KAR	Calamagrostis x acutiflora 'Karl Foerster' / Feather Reed Grass	1 gal	L	
	LOM LON	Lomandra longifolia 'Platinum Beauty' / Mat Rush	1 gal	L	
	MUH REG	Muhlenbergia capillaris 'Regal Mist' / Regal Mist Pink Muhly Grass	1 gal	WUCOLS	
	MUH RIG	Muhlenbergia rigens / Deer Grass	1 gal	L	
POTENTIAL VINES	CODE	BOTANICAL / COMMON NAME	SIZE	WUCOLS	
	FIC PUM	Ficus pumila / Creeping Fig	5 gal	L	
POTENTIAL GROUND COVERS	CODE	BOTANICAL / COMMON NAME	SIZE	SPACING	WUCOLS
	ARC EME	Arctostaphylos uva-ursi 'Emerald Carpet' / Kinnikinnick	1 gal	36" o.c.	L
	ROS DWA	Rosmarinus officinalis 'Prostratus' / Dwarf Rosemary	1 gal	36" o.c.	M
	TRA JAS	Trachelospermum jasminoides / Chinese Star Jasmine	1 gal	24" o.c.	
POTENTIAL SEED/SOD	CODE	BOTANICAL / COMMON NAME	SIZE	SPACING	
	TUR BIO	Turf Sod Biofiltration Sod / Drought Tolerant Grass Blend	sod		

PLANTING STATEMENT

The proposed landscape plant palette consists of low water use shrubs, groundcover, trees, and ornamental grasses that are considered low maintenance and hardy. Choice of plants is guided by considerations of solar exposure and climate conditions of the site. Plant selection aims for longevity by selecting plants that are long lived varieties of trees, shrubs, groundcover, and grasses.

Street trees planned for Fiddlyment Road and Pleasant Grove Boulevard are London Plane Tree as specified in the North Roseville Specific Plan. Secondary trees and accent trees are chosen from the evergreen and deciduous tree list found in the specific plan.

Shrubs and groundcover container size is no less than 1-gallon size. Trees are no less than 15-gallon size. Plant materials will be spaced to provide substantial cover, but also to allow adequate room to mature into their natural form and ultimate size without required pruning.

IRRIGATION STATEMENT

The irrigation system will be serviced by a new point of connection. The irrigation design will consist of low volume drip irrigation. Proposed trees shall utilize bubbler irrigation to encourage deep root watering. The overall irrigation system will be designed with a smart irrigation controller. A weather sensor will be used to automatically adjust duration of application in accordance with recent weather conditions based on evapotranspiration. Maximum water allowance will be determined by State code. To also be consistent with the planting design, the irrigation design will create separate irrigation stations by hydrozone, locating plants of different water and solar needs into groups.

GENERAL NOTES

Trees and landscape planting shall be placed and pruned as to not interfere at maturity with 13'-6" emergency vehicle access clearance.

Plant material has been selected to not interfere with building numbers and addresses at mature height.

Plant material shall be installed around the backflow preventer providing a four foot clear zone. Plant material shall only be installed on three sides and should not have any thorns.

Provide min. clearance around all electrical equipment per Roseville electric landscape requirements as outlined in specifications for commercial construction.

Provide minimum three feet clearance around three sides of transformers and eight feet clearance in front. Install a 3" layer of bark in the clear area.

Provide a minimum three foot clearance around all fire protection equipment.

PARKING LOT SHADE CALCULATIONS

TREE SYMBOL	100%	75%	50%	25%
ACE. OGL.			5 (481) = 2,405	
LAG. NAT.			2 (157) = 314	
LAU. NOB.			4 (157) = 628	
PIS. KEI.	6 (462) = 2,772		11 (481) = 5,291	5 (240) = 1,200
ULM. DRA.	5 (462) = 2,310		23 (481) = 11,063	
ZEL. SER.	9 (462) = 4,158	1 (722) = 722	13 (481) = 6,253	
PARKING LOT AREA	92,530 s.f.			
SHADE REQUIRED (50%)	46,265 s.f.			
TOTAL SHADE	46,635 s.f.			
PERCENT SHADE	51%			

